

TABLETOP DUAL-ZONE INDUCTION HOTPLATE

WITH HOTPLATE AND LID



DOUBLE-O
Induction Hotplate



MODEL	: PIH-2800-BK
VOLT/FREQ	: 220-240V / 50/60Hz
HEATING TYPE	: Induction
NO. OF ZONE	: 2 Zones
POT-SIZE DETECTION	: 120mm - 260mm
POWER	: 2800W Left Zone - 1500W Right Zone - 1300W
SIZE	: L462 x W244 x H56mm



PORTABLE & SLIM INDUCTION

Lightweight compact, slim & space-saving, use only when required. Its compact size allows it to fit seamlessly into various kitchen setups, providing placement flexibility and storing when not in use. With no installation required, it's perfect for renters or anyone with limited kitchen space.



DURABLE CERAMIC GLASS TOP

The ceramic glass surface is 4-5 times tougher than standard tempered glass, ensuring enhanced durability and long-lasting performance. It can withstand temperatures up to 400°C, making it resistant to high heat and perfect for continuous cooking.



KNOB CONTROL WITH LED DISPLAY

Simple power settings adjustment for each cooking zone. The LED display provides clear visibility of the current power level, ensuring precise control over your cooking.



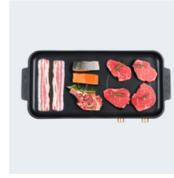
OVERHEATING PROTECTION

Automatically shut off the induction cooker if it detects temperatures exceeding safe levels. This protects the appliance from damage and ensures the safety of the user and the surrounding environment.



SYNCHR-O HOTPLATE MODE

Activate by a Touch, Adjust with a Twist - simultaneously control temperatures on both zones for enhanced convenience. Temperature adjustments synchronize effortlessly across both zones, ensuring seamless operation and precise cooking control.



LARGE HOTPLATE WITH LID

Generous cooking space across 2 zones, ideal for grilling large portions. Crafted from durable, dishwasher-safe cast aluminum with a non-stick surface, cleanup is effortless! Complete with a lid featuring a heat-resistant handle for safe handling, it seals in heat and moisture, enhancing the flavor of your dishes.



DESIGN WITH SAFETY IN MIND

Child Lock to prevent children from accidentally adjusting the settings, offering parents peace of mind. Also, the residue heat indicator 'H' enhances safety by alerting users when the cooking surface is still hot even after the cooking process has ended.



TEMPERATURE CONTROL

Doesn't only adjust heating power by Wattage (W), but also provides the option to control by temperature (°C), ensuring better control over temperature for your cooking needs.



TIMER SETTING

Program the cooker to shut off automatically after a set duration, helping to prevent overcooking or burning of food. It also enables you to multitask in the kitchen without constantly monitoring the cooking process.



DUAL FUNCTIONALITY

Use as a standard countertop induction cooker without the Hotplate. The two-zone induction cooker operates independently, allowing you to cook with various induction-compatible cookwares simultaneously. This flexibility ensures quick and precise cooking, making it a versatile addition to your kitchen.